

RYAN INTERNATIONAL SCHOOL, FARIDABAD
2014-15 (SET – A)

Subject : *Multimedia And Web Technology*
Time allowed : *3 hours*

Class : *XII*
Maximum Marks : *70*

Note :

- Please check that this question paper contains 7 questions.
- Answer the questions after **carefully reading** the text.
- Please write down the serial number of the question before attempting it.

Q1. Study the following data and answer the questions given below:

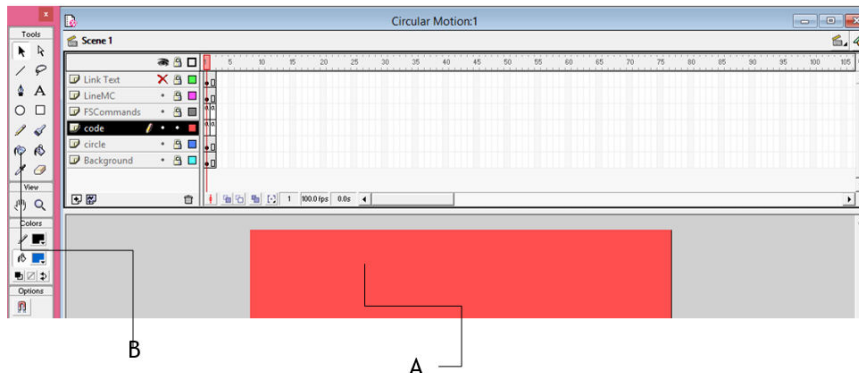
Customer.mdb

CustomerID	Name	Email	CountryCode	Budget	Used
C001	Win Weerachai	win.weerachai@shotdev.com	TH	1000000	600000
C002	Jake Sully	jake.sully@shotdev.com	EN	2000000	800000
C003	Tony Stark	tony.stark@shotdev.com	US	3000000	600000
C004	Peter Parker	peter.parker@shotdev.com	US	4000000	100000
C005	Weerachai Nukitram	webmaster@shotdev.com	TH	4000000	0.0000

- Name the view in which the table is shown. 1/2
 - Create a table UN.mdb of cardinality 4 and degree 3 having one to many relationship and suggest the names of any two mandatory fields to be included in the new table. 1+ 1/2
 - Identify any one data item from the table UN.mdb 1/2
 - Name the foreign key for the table product.
 - Can this view be used to add a new field to the above table? 1/2
 - Suggest the data types that should be used for each of the fields in the **Customer.mdb** 1
- b) Name the movie file format 1
- The file format is supported by all the computer running Windows, and by all the popular web browsers. It originally created by Microsoft Windows.
 - Developed by Macromedia.
- c) What is / are the disadvantage(s) of using *most* VR systems? 1
- the simulators are of higher cost than their *real* counterparts.
 - addiction
 - temporary nausea, dizziness
 - difficult to use
- d) Explain in reference of database “ inconsistency can be avoided”. 1
- e) Referential integrity is a built-in set of rules Access uses to make sure that the _____ is valid.
Referential integrity can also prevent accidental _____ or _____ of data. 2
- f) Differentiate between a record and a field. 1

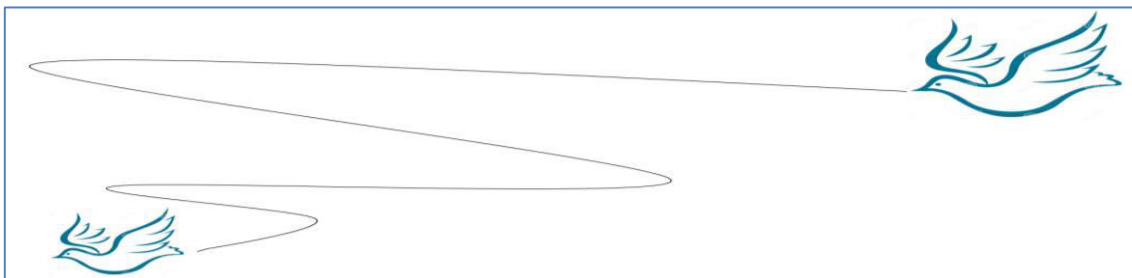
Q2. Question below are based on Macromedia Flash.

- a) Study the figure given below and identify the areas encircled. 2



- i. What is the usage of the area labeled as A and B in the above figure ?
- ii. Given the above settings, Which layer will be shown on the top in the final movie.

- b) Name two methods in which it can be distributed for viewing, also write the difference between these two methods. 2
- c) Differentiate between a guide layer and a mask layer. 1
- d) Define the term stage. 1
- e) 4



- The image on the left hand side shows the position and size of the image for frame 1.
- The image on the right hand side shows the position and size of the image for frame 40.

Write the procedure and property settings for animating the above scenario.

Q3. Answer the following questions based on HTML:

- a) Name the different type of INPUT Tag and attributes.. 2
 - i. Used if the form information receiving program or function can upload a file from the user's computer to the Web Server.
 - ii. An invisible text control that allows the user to store values within a web page without being seen by the user.
- b) Write the HTML code to generate a Web Page in the format given below : 8

Swachh Bharat Abhiyan



This campaign was officially launched on 2 October 2014 at [Rajghat, New Delhi](#), where Prime Minister himself wielded broom and cleaned a road. The campaign is India's biggest ever cleanliness drive and 3 million government employees and schools and colleges students of India participated in this event.

Objectives

- i. To eliminate open defecation
- ii. Conversion of ***insanitary toilets*** to pour flush toilets
- iii. To Eradicate manual scavenging
- iv. To bring about a ***behavioural change*** in people regarding healthy sanitation practices

	Urban	Rural
Number of Households(mn)	79	168
With in-house latrine(%)	81	31
Piped sewer system	33	2



For newer images and news click

Consider the following while writing the HTML code

1. Title of the page should be “**Swachh Bharat**”
2. Link colour should be “Red”, visited link colour should be “Maroon”.
3. Heading of page is “cyan”
4. Picture used in the page is the file “celeb.jpg”
5. Table should have a border of width 1, border of table should be “blue”.
6. Background of first row is “yellow” and of second and third row is “violet”
7. Pages linked to :
 - insanitary toilets*** as “IT.html”
 - behavioural change*** as “BC.html”
8. Bottom message is of size 2 and image used is [gallery.jpg](#) for link to SBA@abc.com

Q4. Answer the following questions based on ASP:

- a) Which two objects are essential for accessing and reading a text file using ASP? Also write their role using an example. 3
- b) Name the property or methods and their object or components. 2
 - i. Checks whether a user has permission to access a specified file and returns TRUE or FALSE.
 - ii. Retrieves all of the HTML content strings from the Content Schedule file and write them directly to the Web page as a list with an <HR> tag after each entry.
 - iii. Stop processing the asp file and returns the current result.

- iv. Destroys all the objects stored in a particular object and releases their resources.
- c) Name any three equivalent tools of ASP. 1
- d) Write syntax of FOR EACHNEXT. 1
- e) Give output of the following statements: 3
 - i. Response.write(monthname(month("date()+4")))
 - ii. Response.write(mid("Happy new year 2015",abs(10^2-106) , 5))
 - iii. Response.Write(right(Ucase("mind power study techniques"),9 MOD 6))

Q5. Answer the following questions based on ASP:

- a) A code to display the contents of a database C:\IT\student.mdb is written below. Fill in the blank to complete it: 3

```

<Html><Head>
<% dim str Set obj = server._____("ADODB. Connection")
str = "Provider = Microsoft.Jet.OLEDB.4.0; Data Source = " _____ ""
obj.open str
set rs = server._____("ADODB. Recordset")
rs.open "student",obj %>
</Head>
<Body>
<h2> Student table</h2>
<table border = 1>
<% while not rs.EOF%>
<TR>
<TD><%=rs("Ädm_no")%></TD>
<TD><%=rs("Name")%></TD>
<TD><%=rs("DOB")%></TD>
<TD><%=rs("Address")%></TD>
<TD><%=rs("Fees")%></TD>
</TR>
<%   rs._____
      wend
      rs.close
      obj.close
      set rs = nothing
      set obj = nothing %>
</table></body></html>

```

- b) Study the code given below:

```

<%
Set surfer =Server._____ (" _____ . _____ ")
surfer . _____ ()

```

Num=surfer. _____()

%>

Fill in the blanks to complete the above code fragment to create an ASP file used to display the number of times a page has been viewed. 2

c) Create the global.asa file which contains an application variable called “TRPcounter” which keeps track of the number of people viewing the www.festdeal.com. 3

d) Write the structure of content schedule file for the ads.txt file which contains two tips 2

1. “If you focus on results, you will never change . If you focus on change , you will get results.

2. “Every Accomplishment starts with the decision to try.”

Where frequency should be 7 and 13 respectively . Each entry should also include a comments.

Q6. Answer the following questions based on VBScript:

a) Write the equivalent script for the following code using Do While .. loop without effecting the output: 2

```
atx=array(10,20,30,40,50,60)
min=0
for i= 3 to 5 step 2
    atx(i)= atx(i)\3
    response.write(atx(i))
next
```

b) Observe the following script:

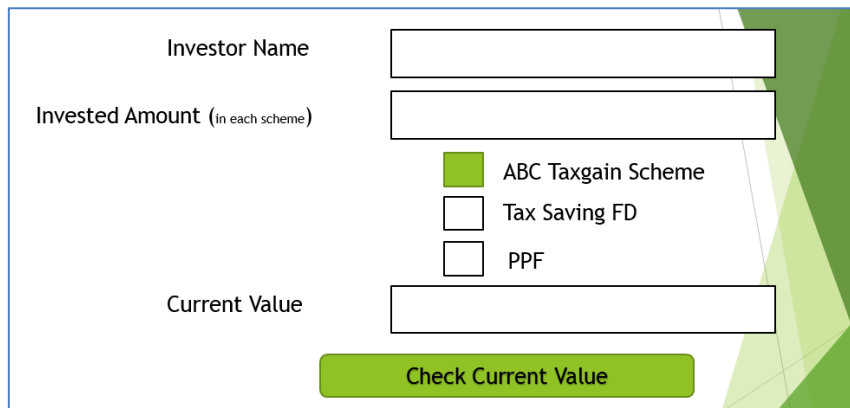
```
<script language = “vbscript”>
OPTION EXPLICIT
Dim B, C
B=10
Do while A<10
    C=C+A+B
    Document.write(c)
    B=B-1
    A=A+3
    Document.write(“<br>”)
loop
</script>
```

Every time this script is executed , the programmer receives an error as soon as the DO while loop is reached. Identify the error and write the corrected code. 1

c) Write a function using VbScript which takes a number as argument and find product of all natural numbers up to that number.(for ex. If user enter 5 as an argument then function should returns $1 \times 2 \times 3 \times 4 \times 5 = 120$ or only 120). 3

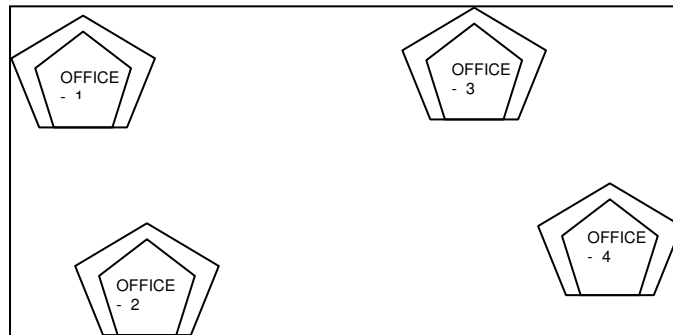
d) Create a form that contains three text control and three checkboxes as shown below. When the user clicks on any or all checkboxes, the appropriate amount should be displayed . ABC taxing scheme returns 12.5% profit . , Tax saving returns 11% and PPF returns 10.25%. Write the HTML code for creating the form and the embedded VBScript code for the click events of the button.(if user invest Rs. 1000 each in all the scheme then the return will be $12.5/100 \times 1000 + 11/100 \times 1000 + 10.25/100 \times 1000$ but if user invest Rs 1000 only in PPF then current value should be $10.25/100 \times 1000$ only).

4



Q 7. Questions given below are based on Network:

- a. Name the transmission media that can be used in 1
 - i. Sparsely populated areas
 - ii. Unidirectional
- b. Define communication protocol. Name all three key elements of a protocol. 2
- c. Differentiate between Baud and bits . 1
- d. Name the following Open Source Software terminology 2
 - i. A non-profit organization founded in October 1985 by Richard Stallman in particular to GNU project.
 - ii. It is an open-source framework for the layout and rendering of internationalized text, including right-to-left scripts and scripts such as Tamil where glyphs are context sensitive.
- e. Cloud9 has set up its new center at DehraDun for its office and web based activities, it has 4 offices of buildings as shown in the diagram below : 4



The distances between the different Offices are given below :

Office 1 to Office 2	150 m
Office 2 to Office 3	160 m
Office 3 to Office 4	55 m
Office 4 to Office 1	15 m
Office 2 to Office 4	90 m

Number of computers

Office 1	15
Office 2	100
Office 3	1
Office 4	100

Answer the following questions based on the above given information :

- (i) Suggest suitable cable layout(s) for connecting the Offices. Also name the topology.
- (ii) Where do you think the server should be placed and explain why ?
- (iii) The Cloud9 is planning to link its office situated in the different part of the same city ,which type of network will be formed .Give reason.
- (iv) Where and why should repeaters and hub/switch be used ?